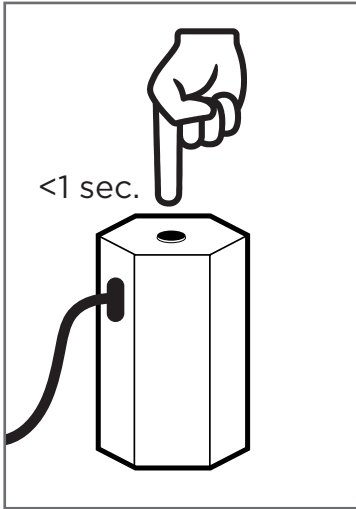
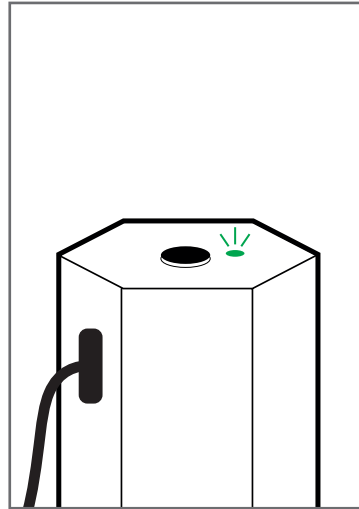




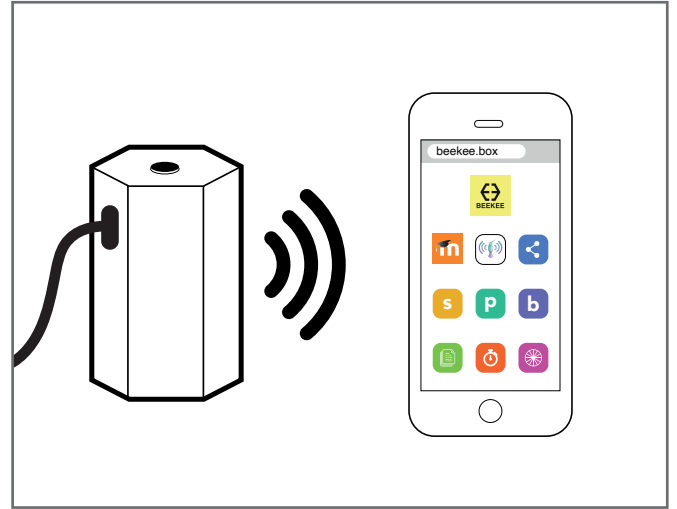
# Beekee Box Quick Start Guide



**1.** Plug the Beekee Box into a power adapter and shortly press the button.



**2.** Wait until the light on top turns steady green (it may take up to 3 minutes)



**3.** Connect your device to the WiFi: **BeekeeBox** (default password: **beekeebox**). Open a browser and go to **beekee.box**



Make sure your mobile data is disabled. If you cannot connect, reload the page two or three times.